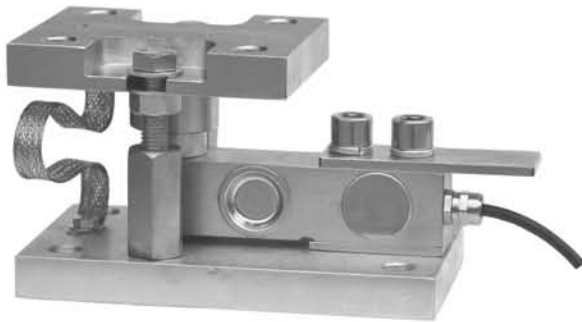


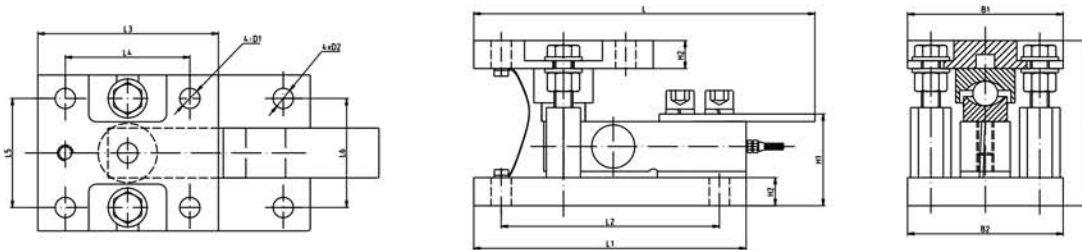
# SQB(-ASS) STATIC WEIGHING MODULE (TypeB)



## Description

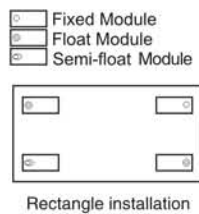
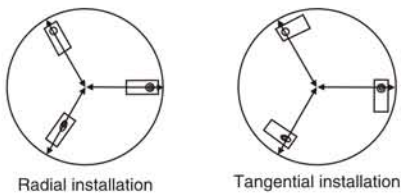
Capacity	0.1,0.15,0.2,0.25,0.3,0.5,1,1.5,2,2.5,3,5,7.5,10t
Sensitivity	2.0 ± 0.002mV/V
Accuracy	C3
Construction	Alloy Steel
Protection Class	IP68

## Dimensions (Unit: mm)

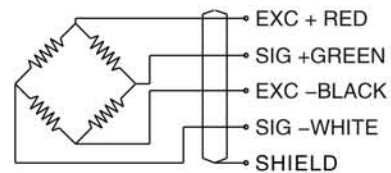


Capacity (t)	L	L1	L2	L3	L4	L5	L6	W	W1	W2	W3	H	H1	H2	D1	D2
0.1, 0.15, 0.2, 0.25, 0.3, 0.5, 1, 1.5, 2, 2.5	210	175	140	116	80	18	17.5	100	100	70	70	106	57.8	18	13	13
3, 5	270	235	200	150	100	25	15	150	150	90	90	135	69.1	23	17	17
7.5, 10	345.2	310	250	210.4	150.4	30	30	180	180	110	110	186.3	91.3	28.5 <sup>(up)</sup> 28.5 <sup>(down)</sup>	26	26

## Install Methods



## Wiring Diagram



## Applications

1. Applies to warehouse scale, hopper scale etc

## Features

1. Welded seal, high protection class, easy installation
2. High accuracy class and good stability

## Technical Parameter

Sensitivity:	2.0 ± 0.002mV/V(0.1t~0.3t) 3.0 ± 0.003mV/V(0.5t~2.5t)	Input impedance:	400 ± 20 Ω
Accuracy class:	0.03%F.S(alloy steel) 0.05%F.S(stainless steel)	Output impedance:	352 ± 3 Ω
Repeatability:	0.02%F.S	Operating temperature range:	-30℃~+70℃
Creep error (30 min):	0.02%F.S	Maximum safe overload:	150% F.S
TCO:	0.02%F.S/10℃	Insulation impedance:	5000MΩ
TC SPAN:	0.02%F.S/10℃	Excitation, recommend:	10V DC (15V Max.)
		Construction:	Alloy Steel/Stainless Steel
		Protection class:	IP67(0.1t~0.3t);IP68(0.5t~2.5t)